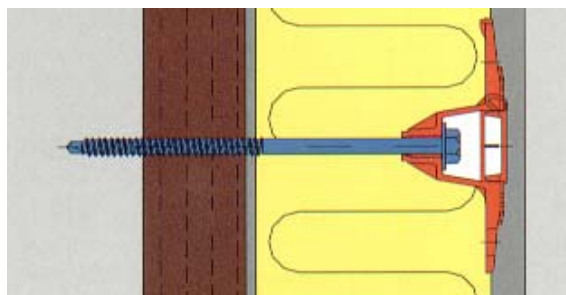


EJOT® Insulation Anchor SBH-T/SW8R 65/25 x L
The fastener combination for sheathing panel

For - Mechanical fixing of insulation boards

Onto - Plywood, orientated strand board, softwood boarding and some cement particleboards



Features

- Engineered washer design:
Ensures optimum adhesion of render.
- Patented integral cover cap:
Seals against ingress of moisture.
Prevents excess plaster in centre recess causing render cracking.
- Thermal loss is almost zero.
- High performance fastener.
- Organic coated for increased corrosion protection.
- Fastener self-drills and taps into steel studwork 0.7 – 1.2mm thick.
- Simple installation.
- Wide range of lengths from - 70 – 270mm.

Application Detail

- Push washer tube into the insulation.
- Insert screw into the washer.
- Drive the fastener with an electric screwdriver: (450 r.p.m.)
- Close the cap.
- Use 8mm Hex drive.
- Minimum application temperature: 5° C.
- Fastener should protrude boards by: 15mm
- Fastener should penetrate timber frame by: 40mm

Calculated Load

Maximum working loads: 25mm Softwood/Boarding: 0.40 kN
22mm Chipboard ($\geq 650 \text{ kg/m}^3$): 0.30 kN

We recommend confirmation by on-site testing.

For Further Information Please Contact: