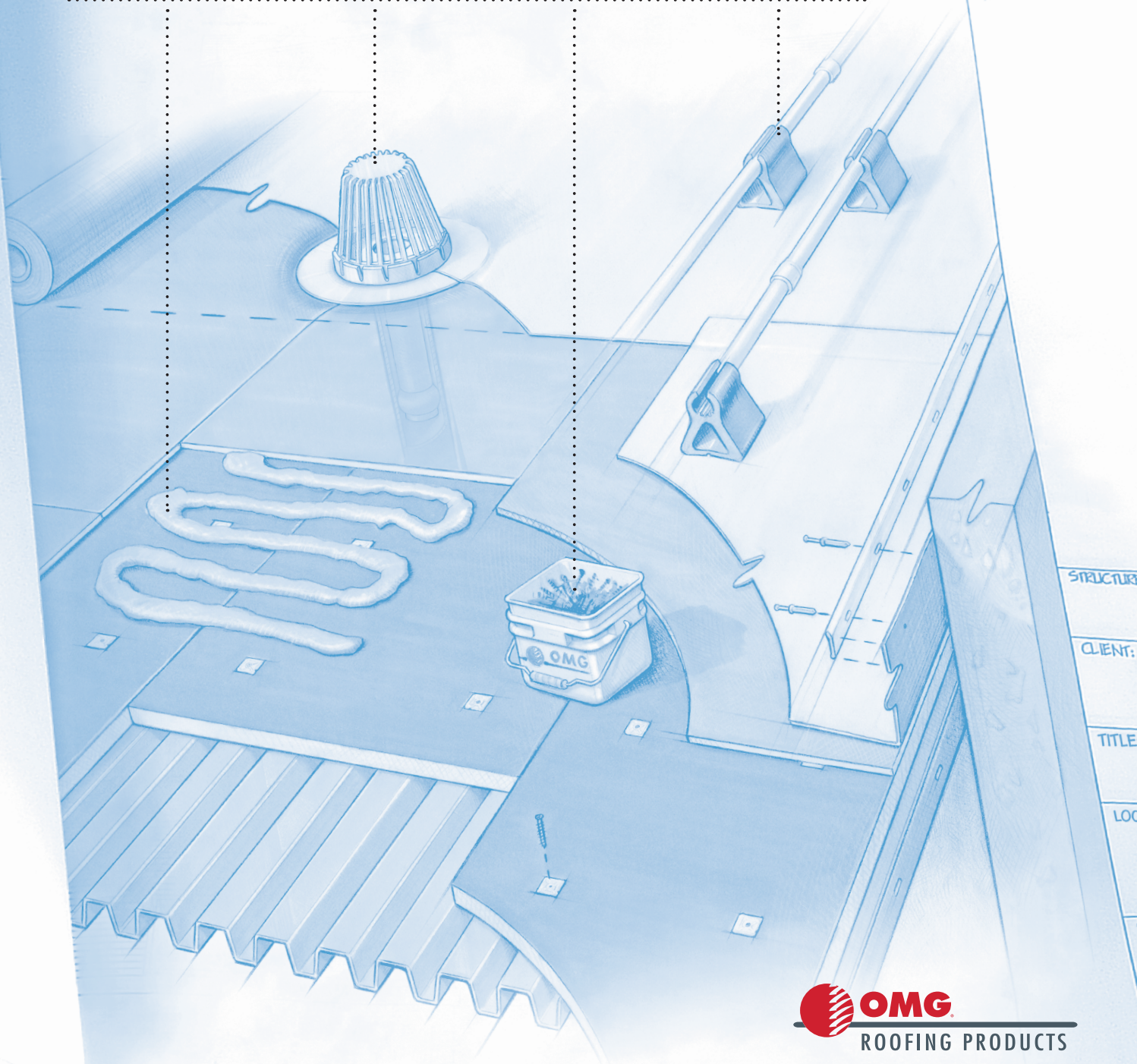


OMG Catalogue

Put OMG in your plans.

ADHESIVES | DRAINS | FASTENERS | PIPE SUPPORTS *and more!*



 **OMG**
ROOFING PRODUCTS

Superior productivity.
Superior performance.

TABLE OF CONTENTS

About OMG	3
Market Reach + Distribution Partners	5
FASTENERS	
- Standard 5.5 mm Fasteners	8
- Heavy Duty 6.3 mm Fasteners	9
- Extra Heavy Duty 6.7 mm Fasteners	10
- CD-10 Concrete Fastener	11
- RetroDriller Fastener	12
- Polymer GypTec Fastener	13
- Masonry Anchor	13
PLATES	
- 50 mm Galvalume Plate	14
- 50 mm Galvalume Barbed Plate	14
- 50 mm Plastic Locking Plate	15
- 75 mm Plastic Locking Plate	15
- 50 mm GypTec Plate	16
- 75 mm GypTec Plate	16
- 75 mm Tri-Rib Plate	17
- RhinoBond Plates	18
- TreadSafe Plates	18
- 102 mm Cardboard Disc	19
TERMINATION BARS	
- Flat, Lip & Channel Bar	20
- Batten Bar	20
ADHESIVES	
- OlyBond500 SpotShot	21
DRAINS	
- SpeedTite Drains	22
- Hercules RetroDrain	22
- Heavy Duty Thermoplastic Retrodrain	23
- Thru-Wall Scupper Drain	23
- U-Flow Seals & Screwdriver	24
PRODUCTIVITY TOOLS	
- OMG TallBoy	25
- RhinoTrac	25
- RhinoBond Plate Marking Tool	26
- RhinoBond Welder	26
- RhinoBond Hand Welding Tool	27
- OlyBond Applicator	27



ABOUT OMG

OMG Roofing Products is a leading global supplier to the flat roofing industry, with products and services that improve productivity and enhance roof system performance. Founded in 1981 as Olympic Fasteners, Inc., the company today employs over 600 people in two divisions – OMG Roofing Products and FastenMaster. OMG is a wholly owned subsidiary of Steel Partners, a global diversified holding company with more than 13,000 employees in 20 countries and total revenue of over \$1.7 billion.

PRODUCTS

OMG Roofing Products offers one of the broadest product lines in the flat roofing industry, from a wide selection of specialty fasteners and insulation adhesives, to pipe supports, roof drains, as well as productivity tools including RhinoBond, the world's leading induction welding system.

SERVICES

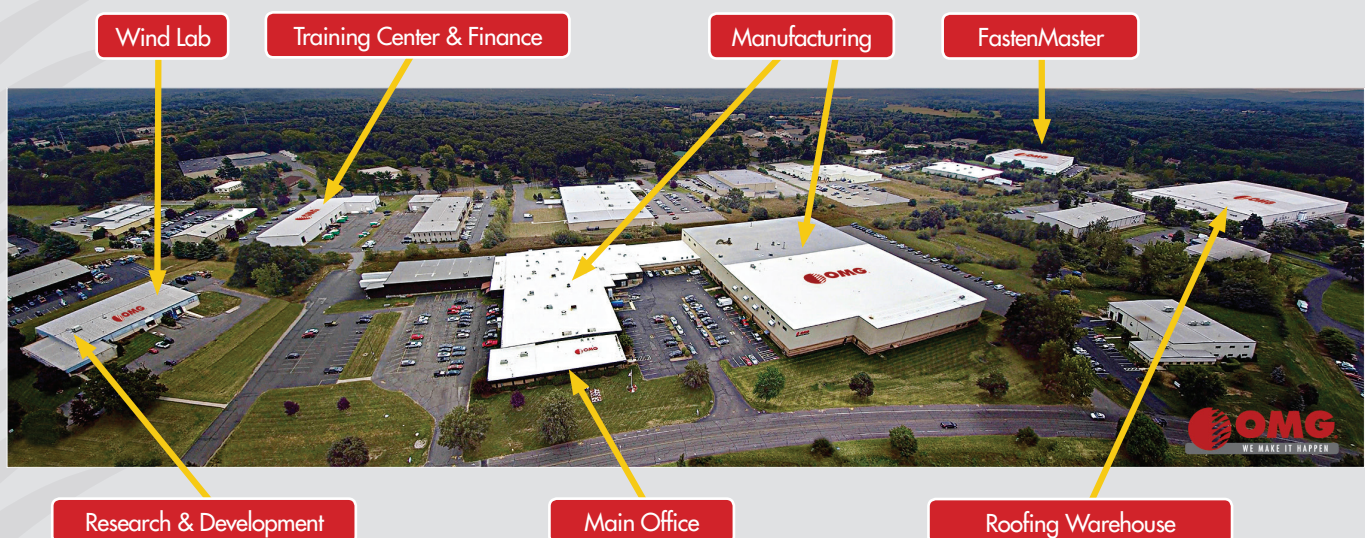
Whether you need a pull-test, job start or extra training for your crew, an OMG representative or one of our many distribution partners throughout Europe is available to assist. For the latest fastening solutions and productivity tools, contact your local OMG field specialist or visit www.OMGRoofing.com.

SAFETY

OMG is committed to ensuring that safety remains the top priority for everyone in the company. From the boardroom to the rooftop, nothing is more important than the safety and well-being of our employees. OMG Roofing employees the world-over are trained and equipped to deal with conditions commonly found on roofs.

"Our goal is to achieve a workplace where the company is successful and our people are personally successful as well. This happens because we maintain a culture that is built on safety, respect, continuous improvement, collaboration and communication."

Hubert McGovern - President & CEO



HIGHEST QUALITY

At each of our manufacturing locations, OMG Roofing Products employs the latest manufacturing techniques to ensure that our products meet or exceed industry standards. Every OMG product has been specifically designed, engineered and tested to meet the needs of the leading roof system manufacturers, and to withstand the rigors of the flat roof industry. In addition, OMG relies on third party testing and verification. As such, most OMG products offer Factory Mutual and/or CE approvals, among others.



Fastener Coating

Most OMG fasteners are coated with our proprietary CR-10 corrosion resistant coating (E-coat), which passes the corrosion requirements of ETAG 006 and Factory Mutual Approval Standard 4470.

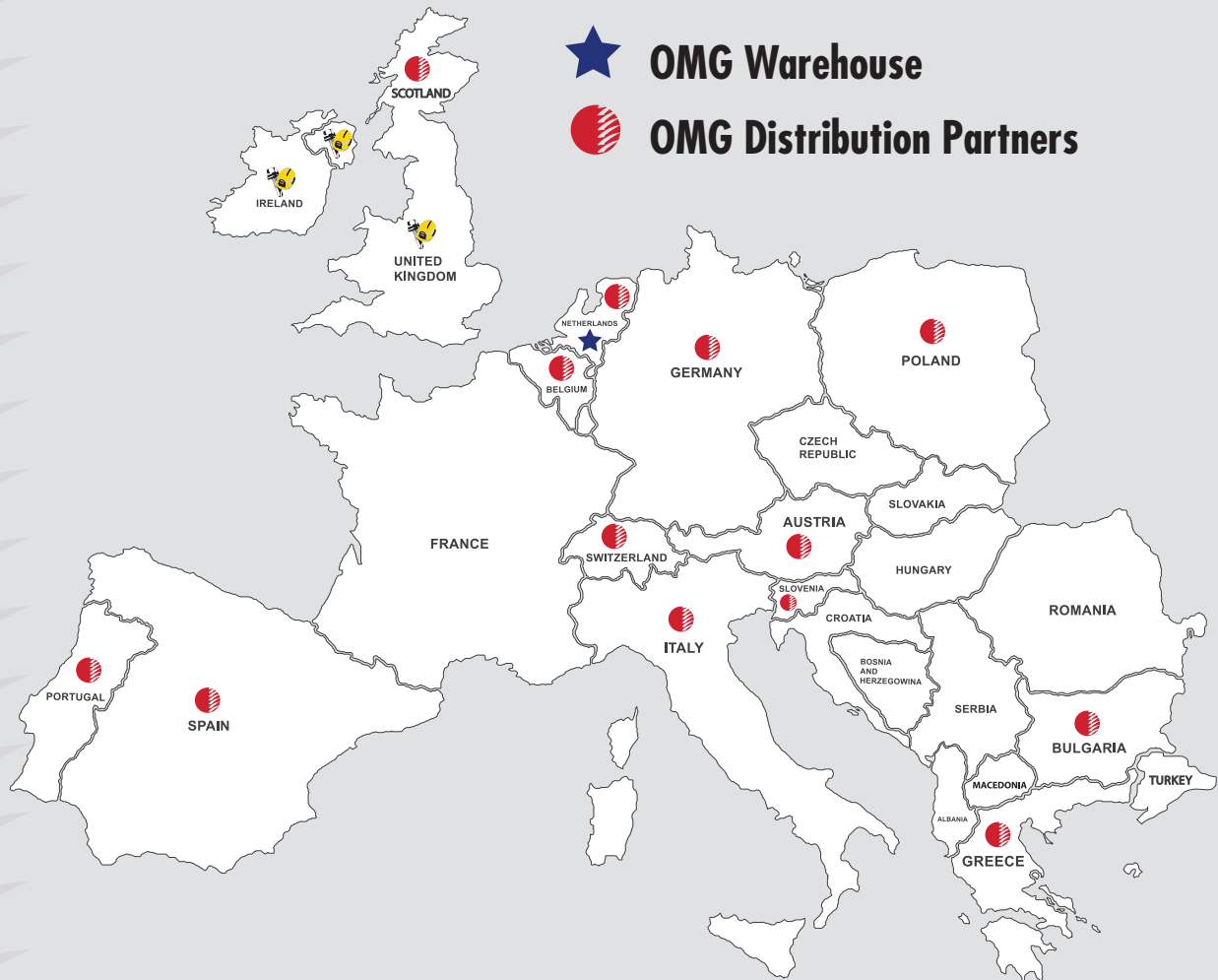


MARKET REACH

OMG Roofing Products has a long and successful history of working with many of the world's leading flat roof system manufacturers to supply products used with their systems.

We also partner with the best roofing distributors throughout Europe to reach local markets and ensure that our products are available when and where needed.

For local consultations and service, please contact our local distribution partner in your country. Please visit OMGRoofing.com for the latest list of distributors.



OMG Roofing Contacts

Europe Market Manager: Lennard Spirig

LSpirig@olyfast.com

Mob: +41 79 200 19 30

Office: +41 71 599 19 30

Benelux: Ruud Veldwijk

RVeldwijk@olyfast.com

Mob: +31 6 28376030

United Kingdom: Mick Steeples

MSteeple@olyfast.com

Mob: +44 7824 364850

MAK Fastener Contacts

Ireland - Dublin

+353 (0)1 4519900

sales@makfasteners.com

Ireland - Cork

+353 (0)21-434890

corks@makfasteners.com

Northern Ireland - Tyrone

+44 (0)28-86758574

salesni@makfasteners.com

United Kingdom - Manchester

+44 (0)161 866 8164

uksales@makfasteners.com

Australia - Tullamarine

+61 (0)3 9078 9119

sales@makfasteners.com.au

www.makfasteners.com.au

FASTENERS, PLATES + BARS

Since the early 1980s, OMG has been one of North America's leading manufacturers of fasteners and pressure plates specifically designed for flat roofing applications. We helped pioneer the industry and were the first to develop a wind uplift test deck for conducting wind tests using Factory Mutual test procedures. Annually, we manufacturing more than a billion fasteners a year for many of the world's leading roofing manufacturers at facilities located in Agawam, Massachusetts, and in Addison, Illinois.

OMG offers a wide variety of fastening solutions for every roofing material and deck type, including steel, timber and concrete. In addition to offering fastening solutions for securing insulation, we also have many options for lap seam fixing and induction fastening.

		Substrate and Screw Type						
		Steel			Concrete		Wood	
		Stand 5,5 mm	XHD 6,7 mm	Retro	HD 6,3 mm	CD-10	Stand 5,5 mm	HD 6,3 mm
Plates	75mm Galv	x	x		x	x	x	x
	50mm Galv	x	x	x	x	x	x	x
	50mm Galv Barbed	x	x	x	x		x	x
	75mm Plastic	x	x		x	x	x	x
	50mm Plastic	x	x	x	x		x	x
	RB	x	x	x	x		x	x
	RB-TS	x	x	x	x		x	x
	75mm Gyptec							x
	50mm Gyptec							x

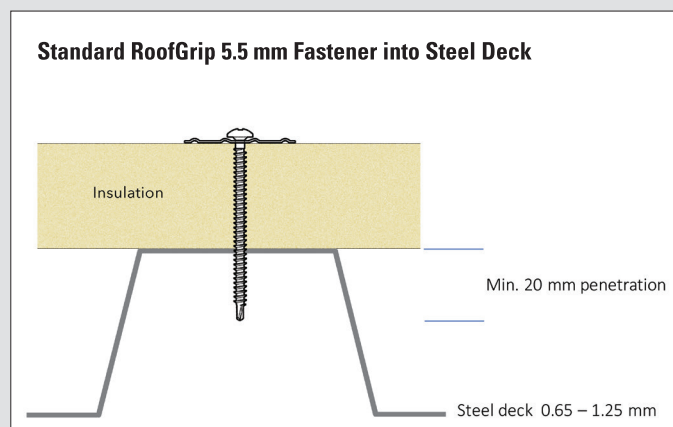


Illustration 1

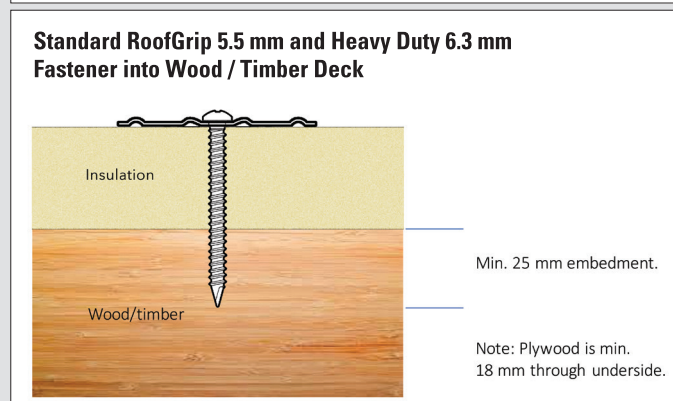


Illustration 2

Heavy Duty 6.3 mm Fastener into Concrete Deck

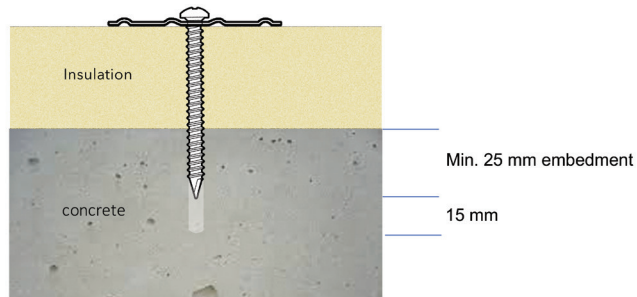


Illustration 3

Extra Heavy Duty 6.7 mm Fastener into Steel Deck

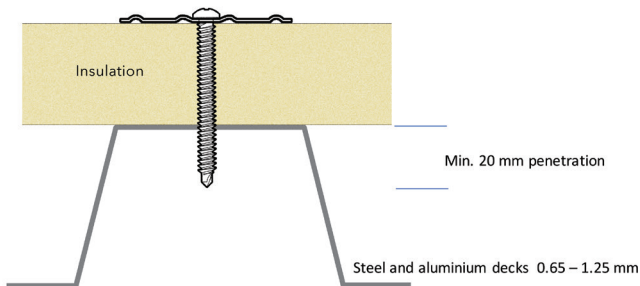


Illustration 4

CD-10 Fastener into Concrete Deck

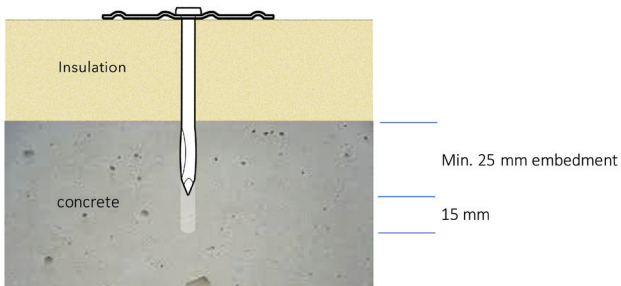


Illustration 5

RetroDriller Fastener into Purlin / Steel

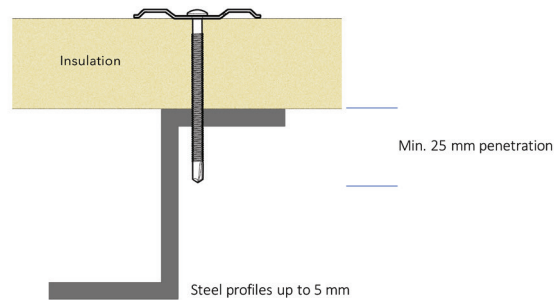


Illustration 6

GypTec into Cementitious Wood Fiber Deck

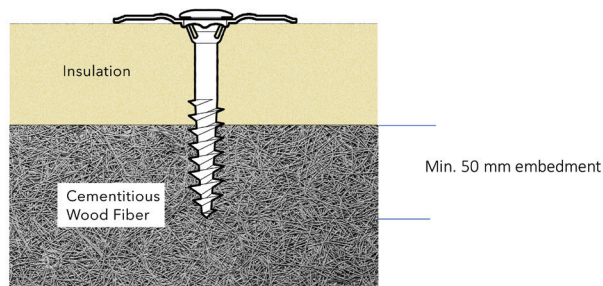


Illustration 7

Standard RoofGrip Drill Point 5.5 mm Fastener

Carbon steel fastener with Phillips No. 3 drive recess and drill point. Coated black with OMG CR-10 which passes the corrosion requirements of ETAG 006.



Cat. No.	Length (mm)	Thread (mm)	Pkg Qty	Weight (Kg)
RGDM40B	40	Full	1000	5.4
RGDM55B	55	Full	1000	7.2
RGDM75B	75	Full	1000	10.8
RGDM100B	100	75	1000	12.7
RGDM125B	125	75	1000	15.8
RGDM150B	150	100	1000	18.1
RGDM175B	175	100	1000	21.7
RGDM200B	200	100	1000	22.7

Designed for securing insulation and membrane to steel 0.65 -1.25 mm and wood/timber decks (min. 25 mm thick).

Compatible with OMG Plates:

- 50 mm Galvalume Plates
- 50 mm Galvalume Barbed Plates
- 50 mm Plastic Locking Plates
- 75 mm Galvalume Tri-Rib Plates
- 75 mm Plastic Locking Plates
- RhinoBond Plates
- TreadSafe Plates

Approvals



See illustrations 1 and 2 on page 6

Heavy Duty 6.3 mm Fastener

Carbon steel fastener with Phillips No. 3 drive recess and drill point. Coated gray with OMG CR-10 which passes the corrosion requirements of ETAG 006.



11.0 mm Truss Head diameter

4.8 mm shank diameter

6.3 mm thread diameter

Cat. No.	Length (mm)	Thread (mm)	Pkg Qty	Weight (Kg)
HD30B	30	Full	1000	5.4
HD45B	45	Full	1000	7.2
HD50B	50	Full	1000	8.1
HD55B	55	Full	1000	8.6
HD75B	75	Full	1000	11.8
HD100B	100	75	1000	15.8
HD115B	115	100	1000	17.2
HD125B	125	100	500	9.9
HD150B	150	100	500	11.8
HD175B	175	100	500	13.6
HD200B	200	100	500	15.4
HD230B	230	100	500	16.8
HD255B	255	100	500	18.6
HD280B	280	100	500	20.4
HD305B	305	100	250	11.3
HD330	330	100	250	12.2
HD355	355	100	250	13.1
HD405	405	100	250	16.8
HD455	455	100	250	18.6
HD510	510	100	250	21.3

Designed for securing insulation and single-ply membrane, wood/timber decks (min. 25 mm thick), and structural concrete decks. (requires pre-drilling). For critical concrete decks or re-roofing projects, OMG recommends pull out testing.

Compatible with OMG Plates:

- 50 mm Galvalume Plates
- 50 mm Galvalume Barbed Plates
- 50 mm Plastic Locking Plates
- 75 mm Galvalume Tri-Rib Plates
- 75 mm Plastic Locking Plates
- RhinoBond Plates
- TreadSafe Plates

Approvals



See illustration 2 on page 6 and illustration 3 on page 7

Extra Heavy Duty 6.7 mm Fastener

Carbon steel fastener with Phillips No. 3 drive recess and drill point. Coated black with OMG CR-10 which passes the corrosion requirements of ETAG 006.



Cat. No.	Length (mm)	Thread (mm)	Pkg Qty	Weight (Kg)
XHD32B	32	Full	1000	6.3
XHD43B	43	Full	1000	9
XHD50B	50	Full	1000	9
XHD75B	75	Full	1000	12.7
XHD100B	100	75	1000	17.2
XHD125B	125	100	500	10.9
XHD150B	150	100	500	12.7
XHD175B	175	100	500	14.9
XHD200B	200	100	500	16.8
XHD230B	230	100	500	19
XHD255B	255	100	500	20.8
XHD280B	280	100	500	23.6
XHD305B	305	100	500	24.9
XHD355	355	100	250	14

The OMG XHD is a high performance fastener designed to secure roofing materials to certain thin steel (≥ 0.55 mm) and lighter, O.S.B., plywood or aluminum roof decks.

Compatible with OMG Plates:

- 50 mm Galvalume Barbed Plates
- 50 mm Plastic Locking Plates
- 75 mm Galvalume Tri-Rib Plates
- 75 mm Plastic Locking Plates
- RhinoBond Plates
- TreadSafe Plates

Approvals



See illustration 4 on page 7

CD-10 Concrete Fastener

Carbon steel fastener with split bulb and diamond point. Coated black with OMG CR-10 which passes the corrosion requirements of ETAG 006.



11.0 mm diameter Flat Top Pan

5.4 mm shank diameter

6.8/7.0 mm split bulb diameter

Cat. No.	Length (mm)	Pkg Qty	Weight (Kg)
CF50B	50	1000	11.3
CF65B	65	1000	13.6
CF75B	75	1000	15.8
CF90B	90	1000	18.6
CF100B	100	1000	20.4
CF115B	115	500	11.3
CF125B	125	500	12.7
CF140B	140	500	14
CF150B	150	500	14.9
CF175B	175	500	17.2
CF200B	200	500	19.9
CF230B	230	500	22.2
CF255B	255	500	24.9
CF280B	280	500	28.1
CF305B	305	500	29.5

The OMG CD-10 is a non-threaded, hammer-in fastener designed to secure insulation and single-ply membrane to structural concrete. Pre-drilling with 5.5 mm bit recommended.

Compatible with OMG Plates:

- 75 mm Galvalume Tri-Rib Plates
- 75 mm Plastic Locking Plates

Approvals



See illustration 5 on page 7

RetroDriller Fastener

Carbon steel fastener with No. 3 Square drive recess and 13 mm drill point. Coated black with OMG CR-10 which passes the corrosion requirements of ETAG 006.



10.7 mm Truss Head diameter

4.9 mm shank diameter

5.8 mm thread diameter

Cat. No.	Length (mm)	Thread (mm)	Pkg Qty	Weight (Kg)
RDDP004B	100	75	500	8.6
RDDP005B	125	75	500	9.5
RDDP006B	150	75	500	11.8
RDDP007B	175	75	500	14
RDDP008B	200	75	500	15.8
RDDP0010B	255	75	500	19.5

The OMG RetroDriller fastener is designed for attaching the single-ply membrane to structural steel purlins (up to 5 mm) in standing seam metal roof retrofit applications.

Compatible with OMG Plates:

- 50 mm Galvalume Plates
- 50 mm Galvalume Barbed Plates
- 50 mm Plastic Locking Plates
- RhinoBond Plates
- TreadSafe Plates

Approvals



See illustration 6 on page 7

Polymer GypTec Fastener

Glass-filled nylon auger fastener with internal 6 mm Square drive.



25 mm diameter head

17 mm thread diameter

Cat. No.	Length (mm)	Thread (mm)	Pkg Qty	Weight (Kg)
GYPTec025	60	38	500	5.9
GYPTec030	75	57	500	7.2
GYPTec040	100	57	500	9
GYPTec050	125	57	500	9.9
GYPTec060	150	57	500	11.8
GYPTec070	175	57	500	13.6
GYPTec080	200	57	250	18.1
GYPTec090	230	57	250	18.1
GYPTec100	255	57	250	19

The OMG GypTec™ Polymer is designed to secure insulation and single-ply membrane to gypsum and cementitious wood fiber (i.e., Insulrock, Permadeck, Tectum®, Heraklith® etc.).

Compatible with:

- 50 mm Gyptec Plates for membrane attachment
- 75 mm Gyptec Plates for insulation attachment

Approvals



See illustration 7 on page 7

Masonry Anchor

Hammer in fastener with zinc plated steel pin. Available in two diameters, 4 mm and 6 mm.



Cat. No.	Length (mm)	Pkg Qty	Weight (Kg)
MA22-4	4 x 22	1000	4
MA25-6	6 x 25	1000	7.7
MA30-6	6 x 31	1000	9.5
MA38-6	6 x 38	1000	10.4
MA50-6	6 x 50	1000	13.1

OMG Masonry Anchors are designed to attach termination bar to concrete or masonry walls.

Compatible with:

- Flat Bar
- Lip Bar
- Channel Bar
- Polymer Batten Bar

50 mm Galvalume Plate

Galvalume® coated steel with round design for even distribution of loads.



Cat. No.	Size (mm)	Pkg Qty	Weight (Kg)
SP50	50	1000	12.7

OMG 50 mm (2-in.) plates are used for lap seam fastening.

Compatible with OMG Fasteners:

- Standard 5.5 mm Fasteners
- Heavy Duty 6.3 mm Fasteners
- Extra Heavy Duty 6.7 mm Fasteners
- CD-10 Concrete Fasteners

Approvals



50 mm Galvalume Barbed Plate

Galvalume® coated steel with barbs and round design for even distribution of loads.



Cat. No.	Size (mm)	Pkg Qty	Weight (Kg)
SP50B	50	1000	12.7

OMG 50 mm barbed Galvalume Plates are used for lap seam fastening of roofing membranes.

Compatible with OMG Fasteners:

- Standard 5.5 mm Fasteners
- Heavy Duty 6.3 mm Fasteners
- Extra Heavy Duty 6.7 mm Fasteners
- RetroDriller Fasteners

Approvals



50 mm Locking Plastic Plate

Durable barbed nylon plate features round design for even distribution of loads.



Cat. No.	Size (mm)	Pkg Qty	Weight (Kg)
NTBLP50	40	1000	7.7

OMG 50 mm Locking Plastic Plates are used to secure single-ply membrane to the substrate.

Compatible with OMG Fasteners:

- Standard 5.5 mm Fasteners
- Heavy Duty 6.3 mm Fasteners
- Extra Heavy Duty 6.7 mm Fasteners
- RetroDriller Fasteners

Approvals



75 mm Plastic Locking Plate

High performance polypropylene plate features round design for even distribution of loads.



Cat. No.	Size (mm)	Pkg Qty	Weight (Kg)
PLL75	75	1000	10.9

75 mm Locking Plastic Plates are designed for securing insulation to the roofing deck.

Compatible with OMG Fasteners:

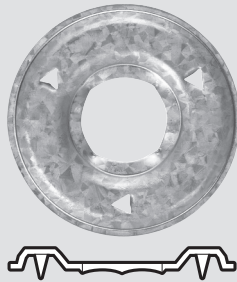
- Standard 5.5 mm Fasteners
- Heavy Duty 6.3 mm Fasteners
- Extra Heavy Duty 6.7 mm Fasteners
- CD-10 Concrete Fasteners

Approvals



50 mm GypTec Plate

Galvalume coated barbed steel designed for use with Polymer GypTec Fasteners.



Cat. No.	Size (mm)	Pkg Qty	Weight (Kg)
SPGYPTec2	50	1000	13.6
GYPTecBIT	5	EA	0.4

50 mm GypTec Plates lock into GypTec Fasteners and are used to secure single-ply membrane to gypsum and cementitious wood fiber roof decks.

Compatible with:

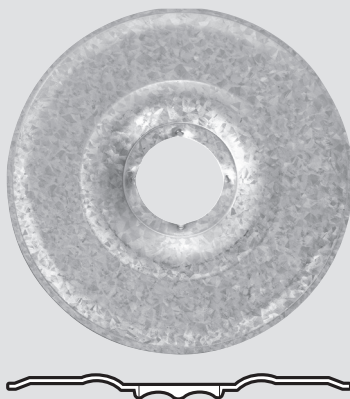
- OMG Polymer GypTec Fasteners

Approvals



75 mm GypTec Plate

Galvalume coated steel plate designed for use with Polymer GypTec Fasteners.



Cat. No.	Size (mm)	Pkg Qty	Weight (Kg)
SPGYPTec75	75	1000	20.4
GYPTecBIT	5	EA	0.4

75 mm GypTec Plates lock into GypTec Fasteners and are used to secure insulation to gypsum and cementitious wood fiber roof decks.

Compatible with:

- OMG Polymer GypTec Fasteners

Approvals



75 mm Galvalume Tri-Rib Plate

Galvalume® coated steel with round design for even distribution of loads.



Cat. No.	Size (mm)	Pkg Qty	Weight (Kg)
SP75-ST	75	1000	16.3

OMG 75 mm Plates are used for securing insulation to the roof deck.

Compatible with OMG Fasteners:

- Standard 5.5 mm Fasteners
- Heavy Duty 6.3 mm Fasteners
- Extra Heavy Duty 6.7 mm Fasteners
- CD-10 Concrete Fasteners

Approvals



RhinoBond Plates

Galvalume coated plates are designed for use with the RhinoBond System.



Cat. No.	Description	Color	Size (mm)	Pkg Qty	Weight (Kg)
RBP80A-PVC	PVC RhinoBond Plates	Black	80	500	15.8
RBP80-TPO	TPO RhinoBond Plates	Gold	80	500	15.8

RhinoBond Plates are used to secure single-ply membrane and insulation to roof decks.

Compatible with OMG Fasteners:

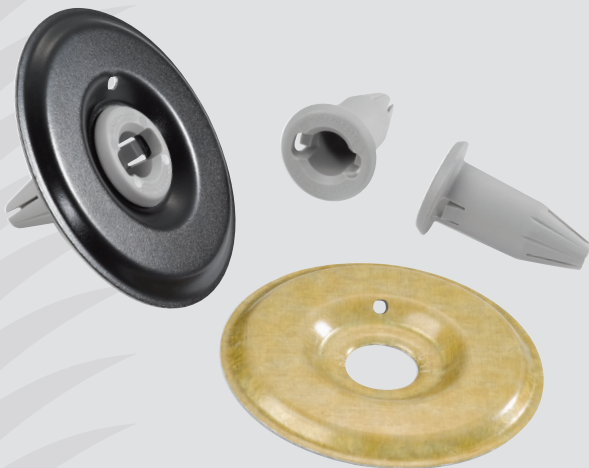
- Standard 5.5 mm Fasteners
- Heavy Duty 6.3 mm Fasteners
- Extra Heavy Duty 6.7 Fasteners
- RetroDriller Fasteners

Approvals



TreadSafe Plates

Galvalume coated plates are designed for use with the RhinoBond System and integrated tubes.



Cat. No.	Description	Color	Size (mm)	Pkg Qty	Weight (Kg)
RBP80TS040PVC	PVC TreadSafe Plates	Black	80	250 (w/ 250 tubes)	9.5
RBP80TS040TPO	TPO TreadSafe Plates	Gold	80	250 (w/ 250 tubes)	9.5

Tube fastening system used to secure single-ply membrane and compressible insulation to roof decks.

Compatible with OMG Fasteners:

- Standard 5.5 mm Fasteners
- Heavy Duty 6.3 mm Fasteners
- Extra Heavy Duty 6.7 Fasteners
- RetroDriller Fasteners

Approvals



NOTE: EPDM RhinoBond and TreadSafe Plates are available on special request. Contact OMG for details.

102 mm Cardboard Disc

Cardboard Disc for use with the RhinoBond System over some insulation types.



Cat. No.	Size (mm)	Pkg Qty	Weight (Kg)
RBP-INSULDISC4	102	250	1.8

102 mm Cardboard Discs are used with the RhinoBond System over EPS and XPS insulation to prevent melting during the induction process.

Compatible with:

- RhinoBond Plates
- TreadSafe Plates

Termination Bars

Extruded aluminum bars.

Cat. No.	Description	Hole Spacing OC (mm)	Length (mm)	Pkg Qty	Weight (kg)
FLATB06	Flat Bar	150	305	50	33.6
LIPTB06	Lip Bar	150	305	50	25.8
CHANB06	Channel Bar	150	305	50	34.5



OMG Bars are designed to terminate single-ply membrane at parapet walls and other penetrations.

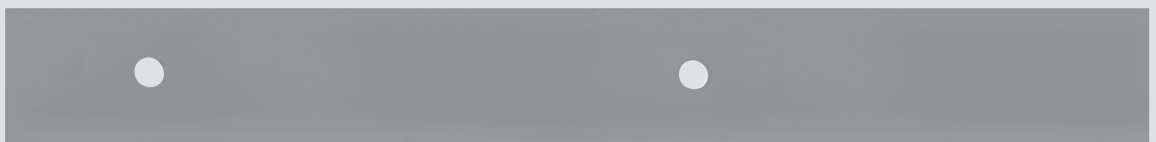
Compatible with:

- Heavy Duty 6.3 mm Fasteners
- Masonry Anchors

Polymer Batten Bar

Extruded polymer batten bar. Packaged in coils.

Cat. No.	Length (m)	Width (mm)	Thickness (mm)	Spacing OC (mm)	Weight (Kg)
6817810	76.25	19	1.2	75	3.6
6341910	76.25	25	1.2	75	4.5



OMG Polymer Batten Bar is designed to secure single-ply membrane to steel, wood/timber and structural concrete decks

Compatible with:

- Standard 5.5 mm Fastener
- Heavy Duty 6.3 mm Fasteners
- Extra Heavy Duty 6.7 mm Fasteners
- CD-10 Concrete Fasteners
- RetroDriller Fasteners
- Masonry Anchors

Approvals



ADHESIVES

In 2001 we entered the adhesives business with OlyBond500 Insulation Adhesive. A simple-to-use, low rise polyurethane foam. Since then, OlyBond Adhesives have secured nearly 300 million square meters of insulation on roofs the world over.

OlyBond500 SpotShot Adhesive

Two-component, low-rise polyurethane foam adhesive.



Cat. No.	Application	Coverage	Temp Range	Pkg Qty	Weight (Kg)
OB500SS-R	Insulation	40 m2 - 55 m2 / case	4°C Rising	4, 1500 ml Cartridges	8.1
OB500SS-W65	Insulation	41 m2 - 55 m2 / case	-17°C to 18°C	4, 1500 ml Cartridges	8.1
FLAD-CARTRIDGE	Membrane	40 m2 - 55 m2 / case	4°C Rising	4, 1500 ml Cartridges	8.1
OB500SSMIXTIP-10	SpotShot Mix Tips	n/a	n/a	10	1.3

OlyBond500 Insulation Adhesive is designed to secure insulation to roof decks and can also be used between insulation layers, and to secure fleece backed membranes. OlyBond SpotShot should be applied with OMG's exclusive Cordless Applicator. See page 27 for Details.

Temperature-Optimized Grades:

- Regular Grade for Temperatures above 4°C
- Winter Grade for Temperatures between -17°C and 18°C

Approvals

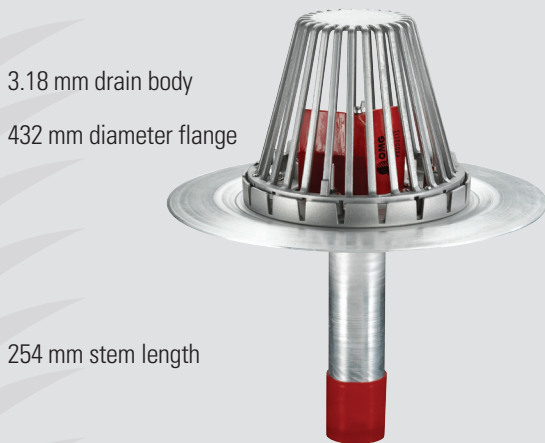


DRAINS

As the premiere supplier of commercial roofing accessories, it was important that we enter the drain business to support our growing customer base. Since 1998, OMG has provided a wide array of retrofit drain products. Today, we are designing drains with integrated vortex breaker technology to improve roof drainage for better performing roofs.

OMG SpeedTite Drains

Spun aluminum drain with mechanical seal. Exceeds the ANSI/SPRI RD-1 standard which requires the seal to hold a 3 m column of water for 24 hours without leaking. Available in 75 and 100 mm.



Cat. No.	Stem Diameter (mm)	Pkg Qty	Weight (Kg)
SPT3A	76	Each	4.9
SPTTP03A	76	Each	3.6
SPTPVC3A	76	Each	3.6
SPT4A	100	Each	4.9
SPTTP04A	100	Each	3.6
SPTPVC4A	100	Each	3.6

Can be used in new and re-roofing applications. Compatible with all roof covers. Dome and clamping ring are made of heavy duty cast aluminum. Available with TPO and PVC coated flange.

Approvals



Hercules RetroDrain

Spun aluminum drain with mechanical seal. Exceeds the ANSI/SPRI RD-1 standard which requires the seal to hold a 3 m column of water for 24 hours without leaking. Available in 75, 100, 125 and 150 mm.



Cat. No.	Stem Diameter (mm)	Pkg Qty	Weight (Kg)
HDAL3A	75	Each	4.9
HDAL4A	100	Each	4.9
HDAL5A	125	Each	4.9
HDAL6A	150	Each	4.9

Can be used in new and re-roofing applications. Compatible with all roof covers. Dome and clamping ring are made of heavy duty cast aluminum.

Approvals



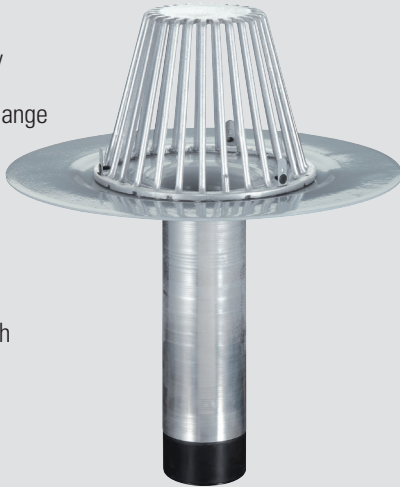
Heavy Duty Thermoplastic RetroDrain

Spun aluminum drain with mechanical seal has a coated flange for direct hot-air welding of thermoplastic membrane (TPO & PVC). Exceeds the ANSI/SPRI RD-1 standard which requires the seal to hold a 3 m column of water for 24 hours without leaking. Available in 75, 100, 125 and 150 mm.

3.18 mm drain body

432 mm diameter flange

254 mm stem length



Cat. No.	Stem Diameter (mm)	Pkg Qty	Weight (Kg)
HDPVC3A	75	Each	3.6
HDPVC4A	100	Each	3.6
HDPVC5A	125	Each	3.6
HDPVC6A	150	Each	3.6
HDTP03A	75	Each	3.6
HDTP04A	100	Each	3.6
HDTP05A	125	Each	3.6
HDTP06A	150	Each	3.6

Can be used in new and re-roofing applications. Compatible with TPO or PVC roof covers depending on type ordered.

Approvals



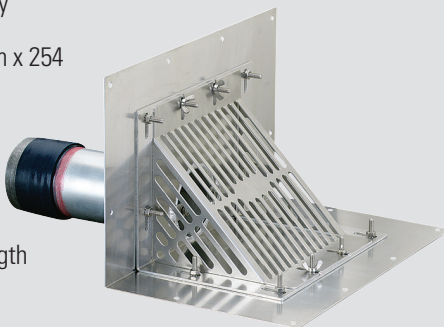
Thru-Wall Scupper RetroDrain

Aluminum and stainless steel components with a RAC Backflow Compression Seal. Exceeds the ANSI/SPRI RD-1 standard which requires the seal to hold a 3 m column of water for 24 hours without leaking. Available in 75, 100, 125 and 150 mm.

2.0 mm drain body

406 mm x 254 mm x 254 mm flange

230 mm stem length



Cat. No.	Stem Diameter (mm)	Pkg Qty	Weight (Kg)
SCUPRD3	75	Each	3.1
SCUPRD4	100	Each	3.1
SCUPRD5	125	Each	3.1
SCUPRD6	150	Each	3.1

Can be used in new and re-roofing applications with single-ply, modified bitumen and BUR. Includes compression-based termination on both horizontal and vertical surfaces.

Approvals



U-Flow Seals & Screwdriver

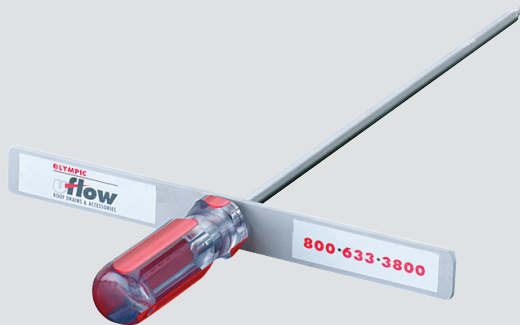
Patented mechanical EPDM rubber compression seal with nylon flange and stainless steel screws.
Available in 75, 100, 125 and 150 mm.



Cat. No.	Diameter (mm)	Pkg Qty	Dimensional Weight (Kg)
UF3	75	Each	0.45
UF4	100	Each	0.45
UF5	125	Each	0.45
UF6	150	Each	0.45
UADR	n/a	Each	0.45

Used when shortening various OMG drain stems.
Installed with specialty U-Flow Screwdriver.

Approvals



PRODUCTIVITY TOOLS

When it comes to saving time and labor on the roof, no one offers more than OMG Roofing Products. We have a full assortment of tools designed to enhance rooftop productivity and installation quality, so you can get off the roof faster and on to the next project.

OMG Tall Boy

Rugged lightweight aluminum fastener installation tool.



Cat. No.	Pkg Qty	Length (mm)	Weight (Kg)
TALLBOY-COMBO	Each	760	3.6

Designed for installing pre-assembled Fasteners and Plates.

Compatible with:

- Standard 5.5 mm Fasteners
- Heavy Duty 6.3 mm Fasteners
- Extra Heavy Duty 6.7 Fasteners

RhinoTrac Tool

Rigid caster wheels improve maneuverability on the roof. Depth adjustment helps prevent over- and under-driving fasteners for a better installation. Large capacity well holds 100 standard RhinoBond Plates. For use with fasteners up to 175 mm.



Cat. No.	Description	Pkg Qty	Weight (Kg)
RTTOOL-IMK	RhinoTrac Tool w/ Makita Gun	Each	20.4

Automated insulation attachment tool for installing RhinoBond Plates and Fasteners is easy to operate and minimizes operator fatigue.

Compatible with:

- Standard 5.5 mm Fasteners
- Heavy Duty 6.3 mm Fasteners
- Extra Heavy Duty 6.7 Fasteners

RhinoBond Plate Marking Tool

Manual Plate Marking Tool is the fastest and easiest method for finding properly installed RhinoBond plates under single-ply membranes.



Cat. No.	Description	Pkg Qty	Weight (Kg)
RB-PlateMarker	RhinoBond Plate Marking Tool	Each	11.3
RB-Crayon-20PK	Replacement Marking Crayons	20 Pack	1

Designed to temporarily mark properly installed RhinoBond Plates so they are easy to find for welding.

Approvals



OMG RhinoBond

World's leading induction based system for installing thermoplastic roofing membranes.

Available for use with global power sources. (110V + 220V)



Cat. No.	Description	Pkg Qty	Weight (Kg)
RBT005-INTL	RhinoBond Tool	1	15.8
RBM002A-6PK	RhinoBond Magnets Aluminum - 6 Pack	6	17.7
RBM003-6PK	RhinoBond Magnets Cool Polymer - 6 Pack	6	15.8
RBTCASE	RhinoBond Tool Case	1	6.3

Designed for installing roofing insulation and thermoplastic (i.e. PVC and TPO) roofing membrane on flat and low-sloped roof decks.

Approvals



RhinoBond Hand Welding Tool

World's leading induction based system for installing thermoplastic roofing membranes now offers a hand-welder option.

Available for use with global power sources. (110V + 220V)



Cat. No.	Description	Pkg Qty	Weight (Kg)
RB-HandWelder	RhinoBond Hand Welder	Each	2.7
RBM003A-10PK	Short Handle Magnets	10 Pack	18.1
RBPLUGKIT-F16A	Type F Plug Kit (Europe)	Each	0.2
RBPLUGKIT-G13A	Type G Plug Kit (United Kingdom, Hong Kong)	Each	0.2
RBPLUGKIT-IEC60309	Type IEC60309 Plug Kit (Ireland)	Each	0.2

Designed for installing roofing insulation and thermoplastic (i.e. PVC and TPO) roofing membrane anywhere on the roof including on sloped or parapet walls and under raised rooftop equipment.

Approvals



OlyBond Cordless Applicator

Easy-to-use cordless applicator for OlyBond500 SpotShot Cartridges.

Cat. No.	Description	Pkg Qty	Weight (Kg)
OB500SSGUN-EU18V	SpotShot European Dispensing Gun with 220V Charger	1	10.4
OB500SSGUN-EUCHG	SpotShot Dispensing Gun 220V Charger	1	1.3



Comes fully assembled with an extra battery and a heavy duty carrying case.

MAK Fastener Contacts

Ireland - Dublin

+353 (0)1 4519900
sales@makfasteners.com

Ireland - Cork

+353 (0)21-434890
corksales@makfasteners.com

Northern Ireland - Tyrone

+44 (0)28-86758574
salesni@makfasteners.com

United Kingdom - Manchester

+44 (0)161 866 8164
uksales@makfasteners.com

Australia - Tullamarine

+61 (0)3 9078 9119
sales@makfasteners.com.au
www.makfasteners.com.au

For additional info and Pull Test data, please contact your local OMG representative or send email to InfoEurope@OlyFast.com

OMG Roofing Contacts

Europe Market Manager:

Lennard Spirig

LSpirig@olyfast.com
Mob: +41 79 200 19 30
Office: +41 71 599 19 30

Benelux:

Ruud Veldwijk

RVeldwijk@olyfast.com
Mob: +31 6 28376030

United Kingdom:

Mick Steeples

MSteeple@olyfast.com
Mob: +44 7824 364850

OMG ROOFING PRODUCTS | 153 BOWLES ROAD, AGAWAM, MASSACHUSETTS 01001 USA | +1-413-789-0252 | OMGROOFING.COM

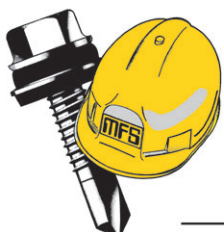
Copyright © 2018 OMG, Inc. All rights reserved.



The Roofing Industry **ALLIANCE** for Progress



DISTRIBUTED BY:



**MAK
FASTENER
SPECIALISTS
LTD**



LINECARD MAK GEN1000 07022018