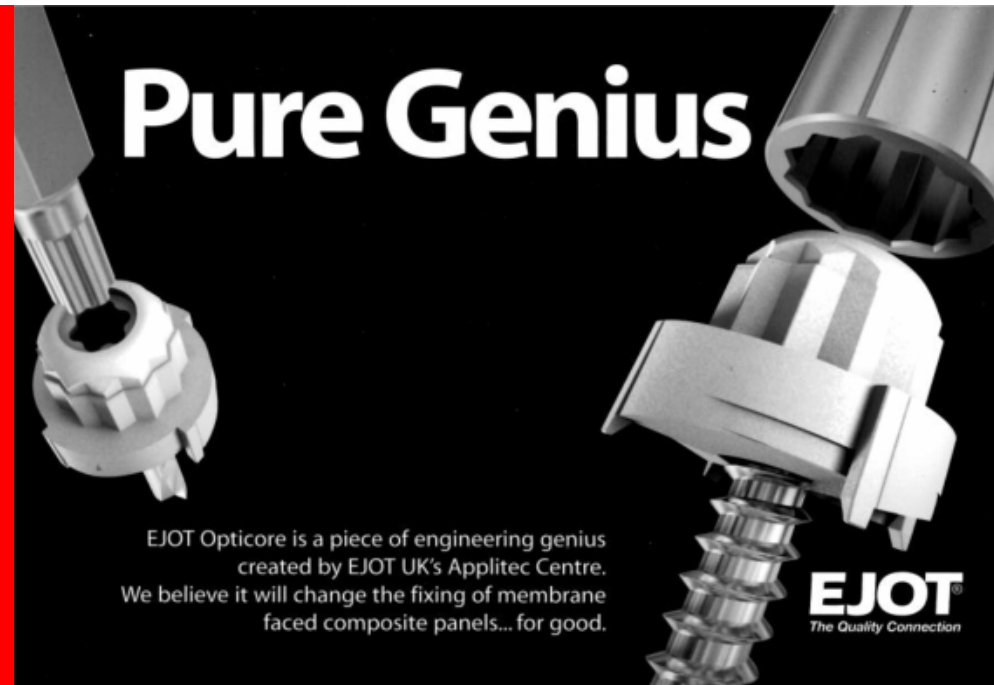


# **EJOT® Opticore** Installation Guide

**EJOT's Innovative self-coring and drilling fastener for cold rolled steel, hot rolled steel and timber together with stitcher fasteners available in both Carbon steel and Stainless steel to complete the full range of fasteners for the Optimum installation of membrane lined composite panels**

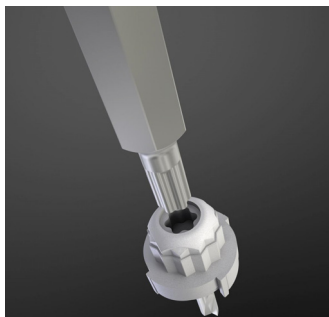


**This comprehensive guide for the installation of the *EJOT OPTICORE* fastener range together with site instructions/demonstrations from *EJOT's* experience sales engineers is to help support site operatives/installers to efficiently install membrane faced composite panels.**



EJOT U.K. Limited • Hurricane Close • Sherburn Enterprise Park • Sherburn-in-Elmet, Leeds. LS25 6PB  
Tel: 01977 687040 • Fax: 01977 687041 • Internet: [www.ejot.co.uk](http://www.ejot.co.uk) • e-mail: [info@ejot.co.uk](mailto:info@ejot.co.uk)

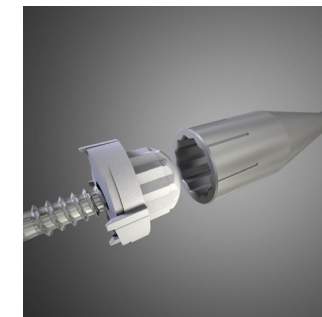
**EJOT® The Quality Connection**



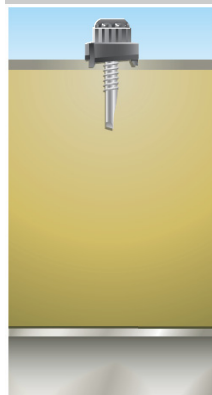
Torx T30plus drive system

## Installation.

- 1. Choice of fastener option** depending upon substrate and fastener material requirements (Installation Guide fastener options).
- 2. Choice of drive system** which is dependant upon the substrate and application. For light section and stitcher fasteners the recommended drive is the internal Torx® T30Plus recess/drive and for heavy section, multiple steel layers and timber the recommended drive is the external Bi-Hex drive of the Duo-drive special nylon head.

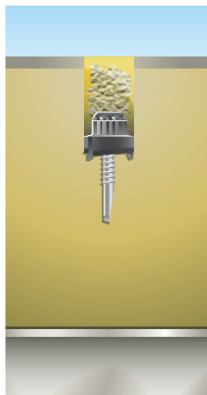


Bi-Hex drive system



### 3. Cut and core:

Once the choice of fastener and drive has been selected. Place the drive in a Fein SCS 6.3-19X screw gun and secure fastener on drive socket placing drill point/point of fastener in fixing location on the membrane. The fastener will pierce the membrane, as the Opticore head reaches the membrane it cuts a hole in the membrane and starts to core the insulation.



### 4. Coring :

Upon penetrating the membrane a constant speed and pressure is required to core the insulation and for the insulation to backfill the installation hole. Too fast and the fastener may wander, too much pressure and the insulation will compact between the head and liner preventing the clamping action of the fastener.



### 4. Drill tap secure:

When the fastener touches the liner it begins to drill and then tap into the substrate. When the fastener seats itself, clamping the liner to the substrate, the drive will strip out the internal recess preventing over driving and indicating to the installer that the fastening operation is complete. The external Bi-Hex drive will lock as it seats indicating that the fastening operation is complete. (Drilling speed and end load is as detailed in the EJOT Building Fasteners Catalogue).



Material identification.  
**Carbon OPTICORE Black**  
**Stainless OPTICORE White**



EJOT U.K. Limited • Hurricane Close • Sherburn Enterprise Park • Sherburn-in-Elmet, Leeds. LS25 6PB  
Tel: 01977 687040 • Fax: 01977 687041 • Internet: [www.ejot.co.uk](http://www.ejot.co.uk) • e-mail: [info@ejot.co.uk](mailto:info@ejot.co.uk)

	Fastener Code	Application	Drive bar required
9900100616	Opticore LS 5.5 x 25	Panel to Light section 1.2mm to 3.0mm (Carbon steel)	<b>B</b> or <b>A</b>
9900100609	Opticore HS 5.5 x 38	Panel to Heavy section 4.0mm to 12.0mm (Carbon steel)	<b>A</b>
9900100611	Opticore TS 6.3 x 45	Panel to Timber (Carbon steel)	<b>A</b>
9900100617	Opticore SF 6.3 x 25	Panel side lap stitcher (carbon steel)	<b>B</b> or <b>A</b>
9900100608	Opticore JT3-3-5.5 x 25	Panel to Light section 1.2mm to 3.0mm (Stainless steel)	<b>B</b> or <b>A</b>
9900100610	Opticore JT3-12-5.5 x 40	Panel to Heavy section 4.0mm to 12.0mm (Stainless steel)	<b>A</b>
9900100612	Opticore JT3-2-6.5 x 50	Panel to Timber (Stainless steel)	<b>A</b>
9900100624	Opticore JT3-2-6.3 x 25	Panel side lap stitcher (Stainless steel)	<b>B</b> or <b>A</b>
9900100467	(A) Opticore External Drive bar 11mm Bi-Hex	For Heavy section and timber May also be used for light section and stitchers (installed with care)	
9900100466	(B) Opticore Internal Drive Bar Torx® T30Plus	For light section or stitchers ONLY	



Material identification.  
**Carbon OPTICORE Black**  
**Stainless OPTICORE White**



EJOT U.K. Limited • Hurricane Close • Sherburn Enterprise Park • Sherburn-in-Elmet, Leeds. LS25 6PB  
 Tel: 01977 687040 • Fax: 01977 687041 • Internet: [www.ejot.co.uk](http://www.ejot.co.uk) • e-mail: [info@ejot.co.uk](mailto:info@ejot.co.uk)